

Est.  
1841

YORK  
ST JOHN  
UNIVERSITY

Sperryn Jones, Joanna, Kolaiti, Christina,  
Adams, Mark ORCID: <https://orcid.org/0009-0002-7952-3877> and  
Taylor, Sally (2018) SelfScapesEvent 1. In: SelfScapes Event 1,  
23rd February, Dalby Forest arts workshops. (Unpublished)

Downloaded from: <http://ray.yorks.j.ac.uk/id/eprint/3120/>

Research at York St John (RaY) is an institutional repository. It supports the principles of open access by making the research outputs of the University available in digital form. Copyright of the items stored in RaY reside with the authors and/or other copyright owners. Users may access full text items free of charge, and may download a copy for private study or non-commercial research. For further reuse terms, see licence terms governing individual outputs. [Institutional Repository Policy Statement](#)

# RaY

Research at the University of York St John

For more information please contact RaY at [ray@yorks.j.ac.uk](mailto:ray@yorks.j.ac.uk)

# SelfScapes

Joanna Sperryn-Jones  
Mark Adams  
Christina Kolaiti  
Sally Taylor  
Rachael Burnett  
Kimberley Bennett  
Jen Todman  
Paul Spillelt  
Rob Oldfield

Received Catalyst Funding Nov 2017 – June 2018

SelfScapes refers to the relationship between self and its environment and is a new research cluster at York St John University. The aims of this research cluster is to investigate both the body and place as sites for interconnected experiences and how this might be mediated through a range of media.

It has been a really good experience to set up a new research cluster with catalyst finding so we thought we'd reflect and share the experience for others thinking of doing this...

## **Why set up a research cluster?**

REF! Needs a research narrative... SelfScapes fits within a wider theme of Cultures of Making

Its been nice to work together on research with colleagues and also to invite other artists in who are interested in similar themes

Involving the students in SelfScapes also means they gain first hand experience of research, organising events, external artists and it makes them feel part of the research culture.

## **How we went about finding a common theme**

We talked to each other about our research. Most often in the pub.



Mark Adams

Curated Paths:  
A photographic exploration  
of walking - non-perspectival  
representations of northern  
landscapes



# Mark Adams



Exploring dichotomy between ....romanticism and realism

# Mark Adams



.... mythic and the concrete.



# Christina Kolaiti



Jo Sperry-Jones



Experiencing breaking an environment







Broken body as  
environment to  
Self

Experiencing  
environment  
through a broken  
body

Sally Taylor





Kimberley Bennett

# Putting together a proposal

## Decisions:

We decided to centre the research on making and tailor the events around ways of developing discussion on and through making artwork.

Rather than a one-off event that would disseminate existing research we preferred the idea of a longer term engagement with a group so that ideas could be further developed in a positive and supportive environment. We thought this would provide support for less experienced researchers and students.

Rather than conference papers we did 3 minute Pecha Kuchas to introduce each artists work and ideas as a starting point to enable discussion

We wanted to include an activity of researching/making together. And then to exhibit work as a base for further discussion.

We wanted a publication that would document the research so we could use this to apply for further funding next year. The aim is to create a publication from the exhibition & excerpts of discussions.

Go to Hannah Bernstein in Conference for help planning the budget!!!

# SelfScapes

March 2018

Number of attendees			45	
EXPENDITURE				
	No Required	Cost		NOTES
Arrival tea and coffee		£1.20	£54.00	Arrival refreshments
Still water	4	£1.90	£7.60	Arrival refreshments
Traybakes			£87.75	Mid morning refreshments
Tea and coffee		£1.20	£54.00	Mid morning refreshments
Still water	4	£1.90	£7.60	Mid morning refreshments
Classic Meat Sandwich platters	4	£19.00	£76.00	Lunch
Classic Vegetarian Sandwich platters	4	£19.00	£76.00	Lunch
Vegetarian hot platter	3	£35.00	£105.00	Lunch
Grazing Platter 1	2	£45.75	£91.50	Lunch
Tea and coffee		£1.20	£54.00	Lunch
Traybakes		£1.95	£87.75	Lunch
Still water	4	£1.90	£7.60	Lunch
Still water	4	£1.90	£7.60	Afternoon refreshments
Afternoon tea & coffee		£1.20	£54.00	Afternoon refreshments
Nyala Sauvignon blanc	5	£10.00	£50.00	Drinks reception Day 2
Nyala Cabernet Sauvignon	6	£10.00	£60.00	Drinks reception Day 2
Still mineral water	2	£1.90	£3.80	Drinks reception Day 2
Sparkling water	2	£1.90	£3.80	Drinks reception Day 2
Contingency for special diet requests etc			£50.00	
Total Expenditure			£938.00	

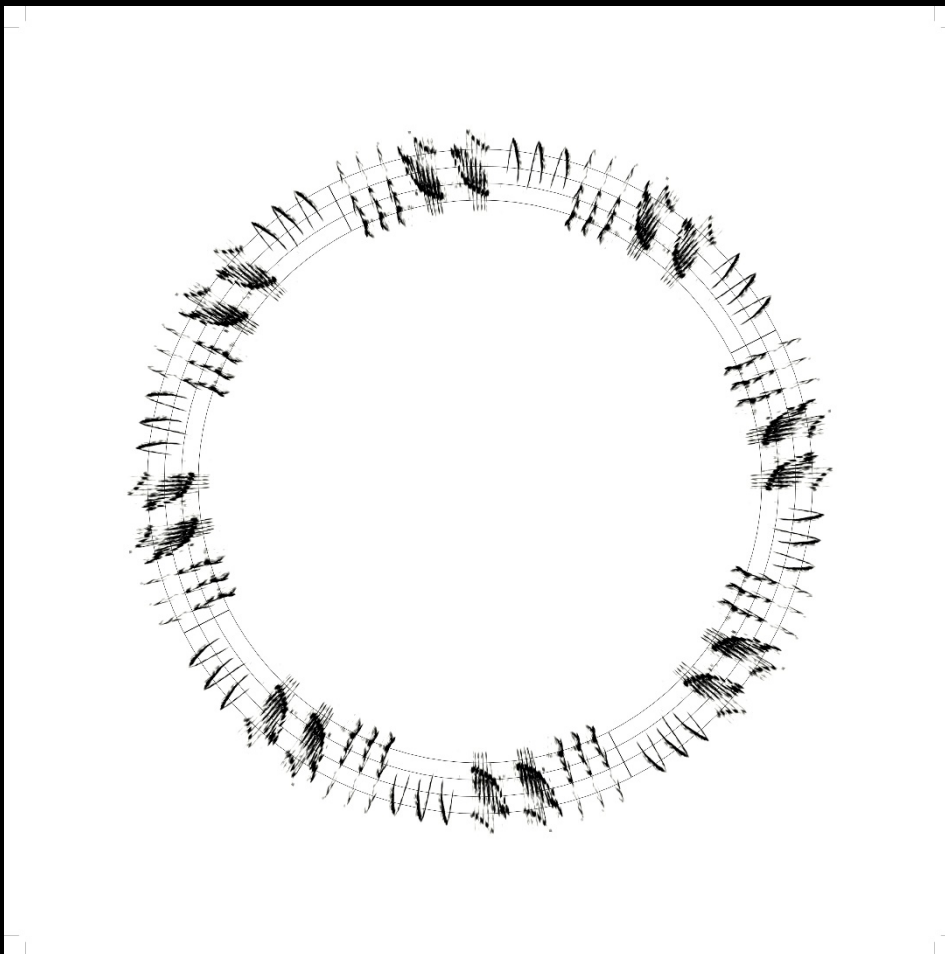
Keymaker: Professor Mike Collier, University of Sunderland



Mike Collier is a lecturer, writer, curator and artist. He studied Fine Art at Goldsmiths College before being appointed Gallery Manager at the ICA in London. He subsequently became a freelance curator and arts organiser, working extensively in the UK and abroad. In 1985 he moved to Newcastle to run the Arts Development Strategy at the Laing Art Gallery, where he initiated the Tyne International Exhibition of Contemporary Art.

For the last 15 years he has worked in education and is currently Reader in Fine Art at the University of Sunderland.

Throughout his career, Mike has maintained his artistic practice and he is now based in Cobalt Studios in Newcastle. He has shown work in a number of one person and group shows in the UK.



*The Dawn Chorus at Cheeseburn (2) Detail ... Blackbird*

**Mike Collier**

Produced in collaboration with Geoff Sample and EYELEVEL Creative

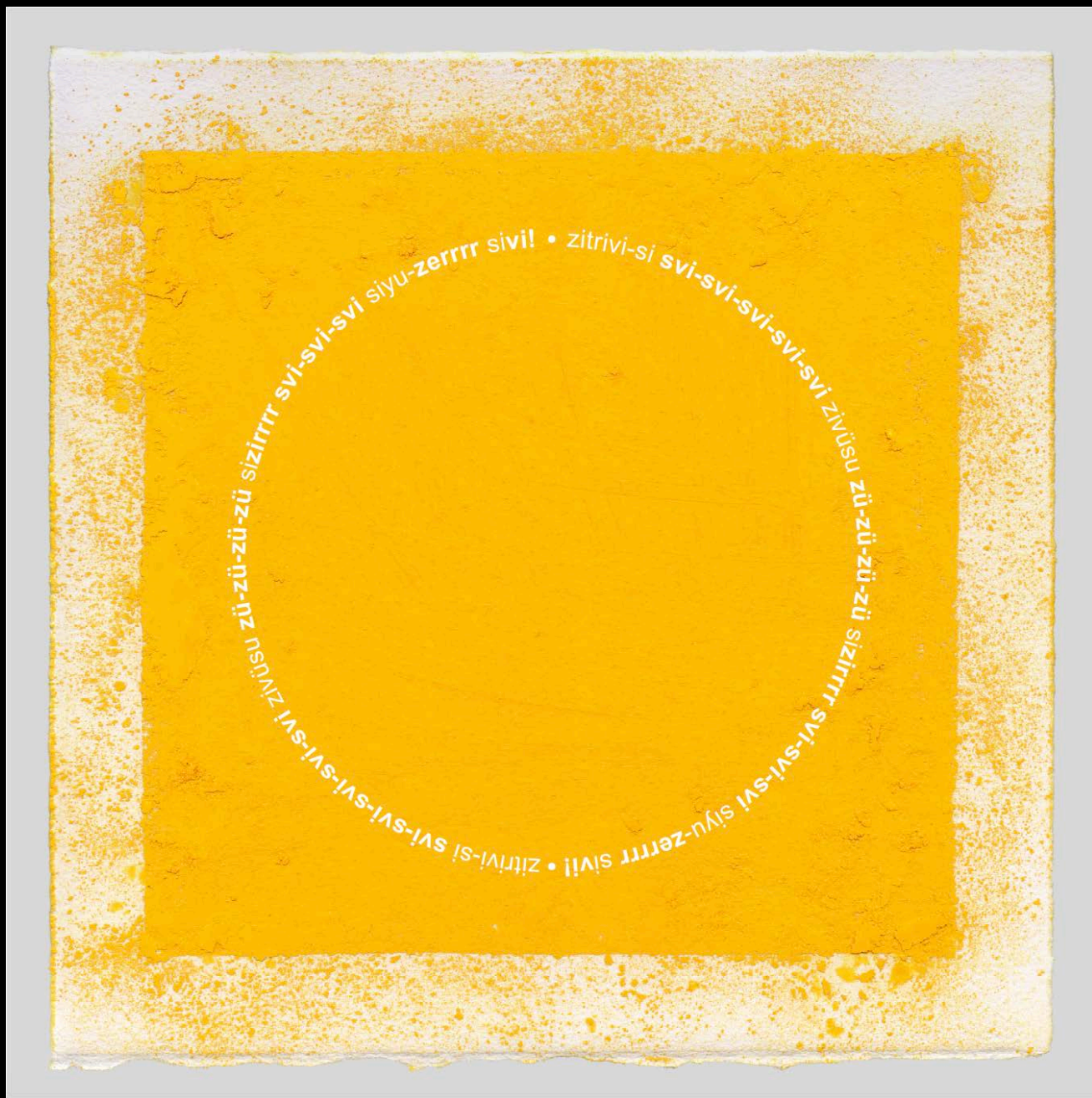
Assisted by Tina Webb

One work; sixteen individual frames

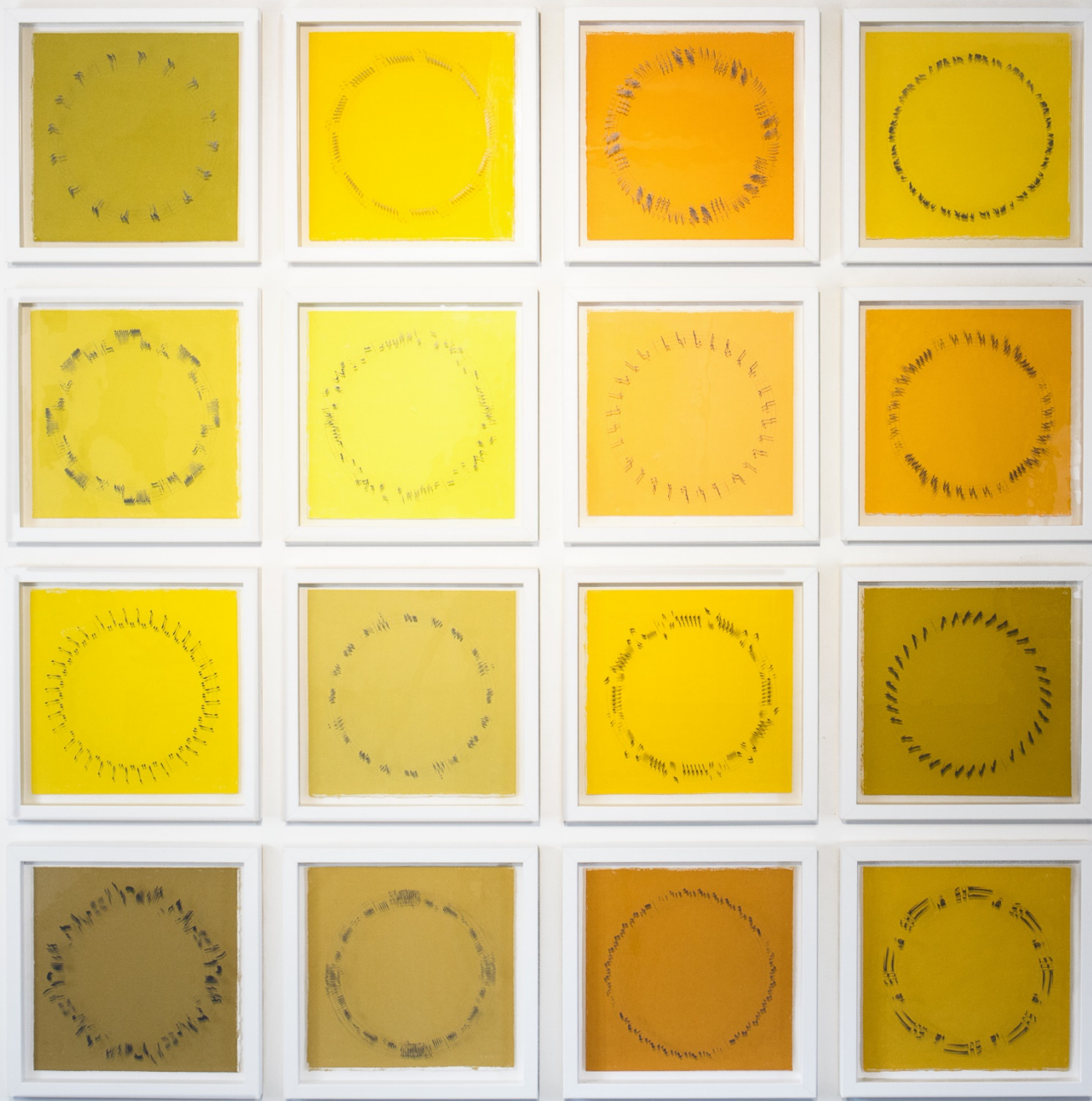
Screen print onto glass (kiln-fired) framing pastel on paper

2017; total size 200 cm square





zù-zù-zù-zù sizzrrr svi-svi-svi siyu-zerrrr sivil • zitrivi-si svi-svi-svi-svi zivüsu  
zivüsu zù-zù-zù-zù sizzrrr svi-svi-svi siyu-zerrrr sivil • zitrivi-si svi-svi-svi-svi







## HOME

Call for Participation in Event 1 on Friday 23<sup>rd</sup> February 2018 at Dalby Forest

Deadline for applications: Monday 22<sup>nd</sup> January 2018 midnight

A research cluster supported by York St John University

		name
1	Organisers	Jo Sperry-Jones
2		Christina Kolaiti
3		Mark Adams
4		Sally Taylor
5		Catherine Sutcliffe-Fuller
6		Kim Bennett
7		Paul Spillett
8		Jen Todman
9	Keymaker & speakers	Mike Collier
10		Brian Walker
11		Petra Young
12	Selected artists for CFP	Anna Lilleegen
13		Anna Svensdotter
14		Clare Smith
15		Jane Rushton
16		Joanna Jones
17		John Harrison
18		Maggie Jackson
19		Ute Kreyman
20	YSJU staff	Helen Turner
21		Lucy O'Donnell
22	External	Janet White
23	Students with an event role	Holly Futers
24		Holly Fegan
25		Molly Shiel
26		Sacha Bykova
27		Natasha Clementson
28		Amber Gosden
29		Amie Calvert
30		Rowenna Godfrey
31		Daisy Taylor
32		Cara Ruddock
33		Ryan Davey
34	Participating students	Jennie Ashworth
35		Esther Purnell
36		Kimberley Clare Pickett
37		Megan Blackburn
38		Ellie Pearson
39		Jack Hartley
40		Mollie Turnbull

## Student Event Roles

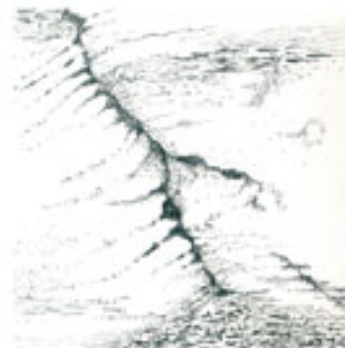
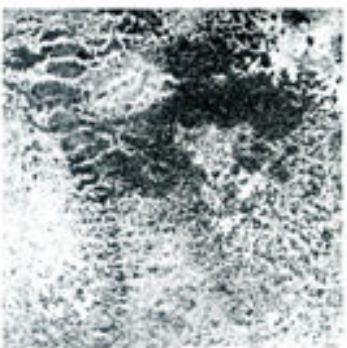
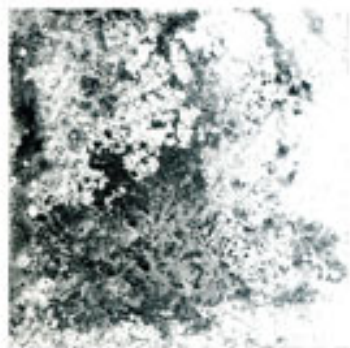
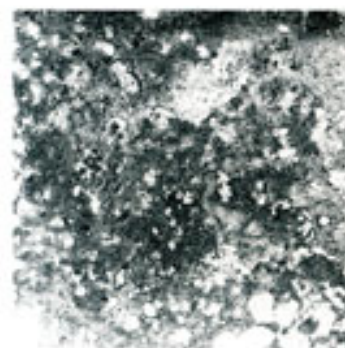
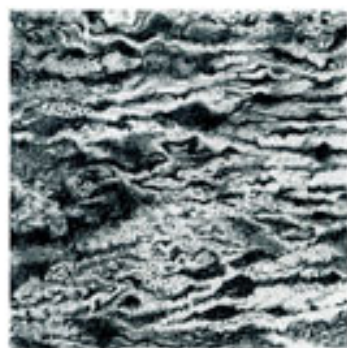
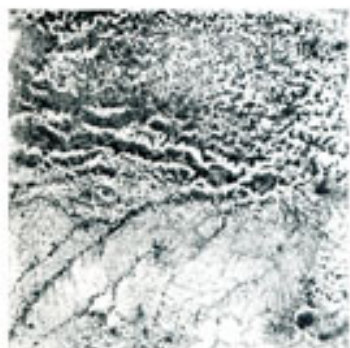
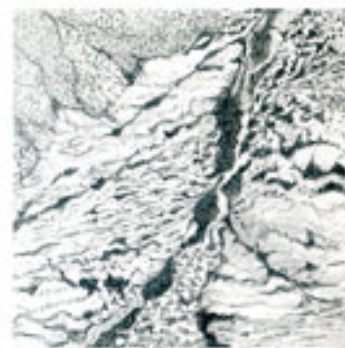
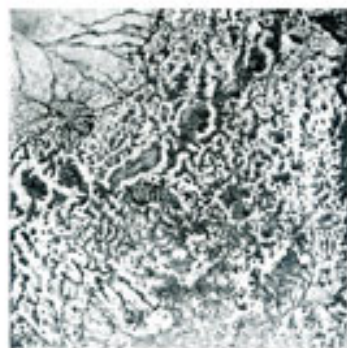
<b>Tweeter in Residence:</b> to compose tweets and photos to tweet after the event (no wifi at Dalby)	<b>Cara Ruddock</b>
<b>Photographers to document the event:</b> for possible inclusion in a publication in July	<b>Holly Futers &amp; Sacha Bykova</b>
<b>Programme booklet designers:</b> to design a programme booklet for the Dalby event using the selected artists photos, statements, bios	<b>Hannah Cash &amp; Lucy Charnock</b>
<b>Blogger in residence:</b> create blog and facebook posts - to post during the week after (there's no wifi at Dalby!)	<b>Molly Shiel &amp; Daisy Taylor</b>
<b>IT techs</b> to check and upload artists' pecha kucha presentations. To video the artists presentations. At end of day to upload images/info from participants from the day. To sound record the end of day discussions. Could be one person or a team doing different parts.	<b>Natasha Clementson &amp; Amber Gosden</b>
<b>Registration committee:</b> 2 students to organise registration at the beginning of the day and make sure artists are introduced to each other. organising welcome tea/coffee and/or morning tea/coffee and/or afternoon tea/coffee	<b>Amie Calvert, Holly Fegan, Rowenna Godfrey, Ryan Davey</b>

















# SelfScapes



## Event 2:

### Friday 22<sup>nd</sup> June at Dalby Forest workshops

- Exhibition in the workshop/exhibition spaces and the forest
- Round table discussions on the exhibition with Louise Hutchinson, YSP and Professor Mike Collier
- Private view in the evening



## Event 2: Friday 22<sup>nd</sup> June at Dalby Forest workshops



Event 2: Friday 22<sup>nd</sup> June at Dalby Forest workshops





# Next year...

## Find more funding...



[Twitter](#) [YouTube](#)

[About Us](#) [News, events and publications](#) [Blog](#) [Finance](#)

[Home](#) > [News, events and publications](#) > [News](#) > [Expanding Excellence in England \(E3\): Research England announces a new funding scheme](#)

## Expanding Excellence in England (E3): Research England announces a new funding scheme

09 April 2018

We are delighted to announce the launch of the Expanding Excellence in England (E3) fund, a first new initiative for Research England. This competitive fund will allocate up to £75m over three years to help grow small but excellent research units and departments in English universities. Bids will be assessed by an expert panel chaired by Professor Sir Ian Diamond, Principal and Vice-Chancellor of the University of Aberdeen.

Research England oversees UK Research and Innovation's England-only functions in relation to university research and knowledge exchange, having previously operated within HEFCE. Research England's mission is to create and sustain the conditions for a healthy and dynamic research and knowledge exchange system in English universities. One way in which it will do this is through providing performance-based, institution-focused funding to deliver excellent research and high-performance knowledge exchange, unlocking potential, generating economic and social impact, and meeting national priorities and global challenges. The E3 fund will be one among several new (and existing) policies and initiatives that support Research England in achieving this goal.

Analysis of REF2014 results shows that there are subject areas with excellent research output operating at a limited scale (so called 'pockets of excellence'). While by no means the only barrier, the nature of funding policy may constrain the ability of universities to grow these 'pockets of excellence', meaning valuable opportunities to enhance research performance and the associated benefits may be lost.

Research England is making up to £75m available through the E3 fund to be allocated between successful applicants over three years (Academic Year 19/20 - 21/22). This is based on a two-stage process, assessed via an expert panel. Gateway criterion at the expression of interest stage focus on research excellence, small size, expansion plans and strategic commitment.

By helping to build new capacity to deliver excellent research, this fund will make an important contribution to enabling UK Research and Innovation to meet the Government's commitment to raise total R&D funding to 2.4 per cent of GDP by 2027.

We are now calling for submissions to the expressions of interest (EOI) stage. We are establishing an expert panel to assess these bids, which we will announce soon. At full bid stage we may call on further expertise where required.

**For more details, guidance and means to submit an expression of interest please click [here](#). Deadline to submit an EOI end noon on 17<sup>th</sup> July 2018.**

### Contact

Tamera Jones, Communications Manager  
0117 931 7606  
[tamera.jones@re.ukri.org](mailto:tamera.jones@re.ukri.org)