

Est.
1841

YORK
ST JOHN
UNIVERSITY

Sperryn Jones, Joanna, Kolaiti, Christina,
Adams, Mark ORCID logoORCID: <https://orcid.org/0009-0002-7952-3877> and Taylor, Sally (2018) SelfScapesEvent 1. In:
SelfScapes Event 1, 23rd February, Dalby Forest arts workshops.
(Unpublished)

Downloaded from: <https://ray.yorks.ac.uk/id/eprint/3120/>

Research at York St John (RaY) is an institutional repository. It supports the principles of open access by making the research outputs of the University available in digital form. Copyright of the items stored in RaY reside with the authors and/or other copyright owners. Users may access full text items free of charge, and may download a copy for private study or non-commercial research. For further reuse terms, see licence terms governing individual outputs. [Institutional Repository Policy Statement](#)

RaY

Research at the University of York St John

For more information please contact RaY at ray@yorks.ac.uk

SelfScapes

Joanna Sperryn-Jones
Mark Adams
Christina Kolaiti
Sally Taylor
Rachael Burnett
Kimberley Bennett
Jen Todman
Paul Spillett
Rob Oldfield

Received Catalyst Funding Nov 2017 – June 2018

SelfScapes refers to the relationship between self and its environment and is a new research cluster at York St John University. The aims of this research cluster is to investigate both the body and place as sites for interconnected experiences and how this might be mediated through a range of media.

It has been a really good experience to set up a new research cluster with catalyst finding so we thought we'd reflect and share the experience for others thinking of doing this...

Why set up a research cluster?

REF! Needs a research narrative... SelfScapes fits within a wider theme of Cultures of Making

Its been nice to work together on research with colleagues and also to invite other artists in who are interested in similar themes

Involving the students in SelfScapes also means they gain first hand experience of research, organising events, external artists and it makes them feel part of the research culture.

How we went about finding a common theme

We talked to each other about our research. Most often in the pub.



Mark Adams

Curated Paths:
A photographic exploration
of walking - non-perspectival
representations of northern
landscapes

Mark Adams



Exploring dichotomy betweenromanticism and realism

Mark Adams



.... mythic and the concrete.

Christina Kolaiti



Jo Sperry-Jones



Experiencing breaking an environment





Broken body as
environment to
Self

Experiencing
environment
through a broken
body

Sally Taylor



Kimberley Bennett

Putting together a proposal

Decisions:

We decided to centre the research on making and tailor the events around ways of developing discussion on and through making artwork.

Rather than a one-off event that would disseminate existing research we preferred the idea of a longer term engagement with a group so that ideas could be further developed in a positive and supportive environment. We thought this would provide support for less experienced researchers and students.

Rather than conference papers we did 3 minute Pecha Kuchas to introduce each artists work and ideas as a starting point to enable discussion

We wanted to include an activity of researching/making together. And then to exhibit work as a base for further discussion.

We wanted a publication that would document the research so we could use this to apply for further funding next year. The aim is to create a publication from the exhibition & excerpts of discussions.

Go to Hannah Bernstein in Conference for help planning the budget!!!

SelfScapes

March 2018

1	Number of attendees		45		
2	EXPENDITURE				
3		No Required	Cost	NOTES	
4	Arrival tea and coffee		£1.20	£54.00	Arrival refreshments
5	Still water	4	£1.90	£7.60	Arrival refreshments
6	Traybakes			£87.75	Mid morning refreshments
7	Tea and coffee		£1.20	£54.00	Mid morning refreshments
8	Still water	4	£1.90	£7.60	Mid morning refreshments
9	Classic Meat Sandwich platters	4	£19.00	£76.00	Lunch
10	Classic Vegetarian Sandwich platters	4	£19.00	£76.00	Lunch
11	Vegetarian hot platter	3	£35.00	£105.00	Lunch
12	Grazing Platter 1	2	£45.75	£91.50	Lunch
13	Tea and coffee		£1.20	£54.00	Lunch
14	Traybakes		£1.95	£87.75	Lunch
15	Still water	4	£1.90	£7.60	Lunch
16	Still water	4	£1.90	£7.60	Afternoon refreshments
17	Afternoon tea & coffee		£1.20	£54.00	Afternoon refreshments
18	Nyala Sauvignon blanc	5	£10.00	£50.00	Drinks reception Day 2
19	Nyala Cabernet Sauvignon	6	£10.00	£60.00	Drinks reception Day 2
20	Still mineral water	2	£1.90	£3.80	Drinks reception Day 2
21	Sparkling water	2	£1.90	£3.80	Drinks reception Day 2
22	Contingency for special diet requests etc			£50.00	
23			Total Expenditure	£938.00	
24					

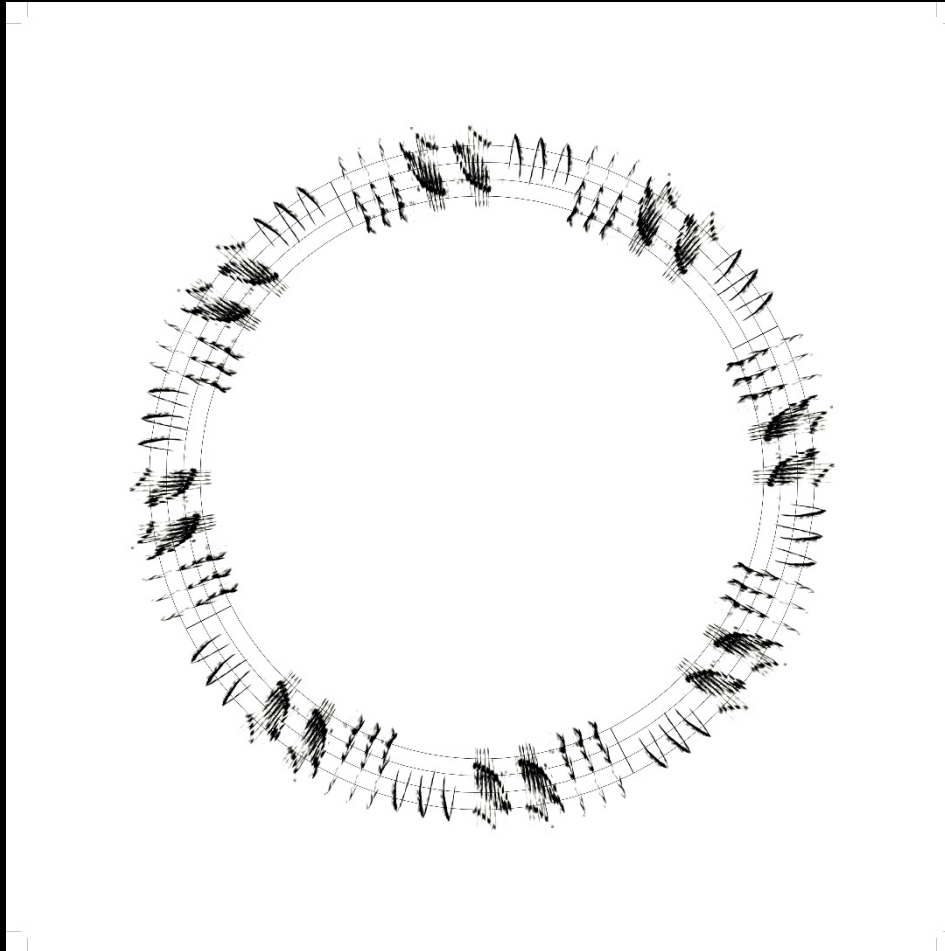
Keymaker: Professor Mike Collier, University of Sunderland



Mike Collier is a lecturer, writer, curator and artist. He studied Fine Art at Goldsmiths College before being appointed Gallery Manager at the ICA in London. He subsequently became a freelance curator and arts organiser, working extensively in the UK and abroad. In 1985 he moved to Newcastle to run the Arts Development Strategy at the Laing Art Gallery, where he initiated the Tyne International Exhibition of Contemporary Art.

For the last 15 years he has worked in education and is currently Reader in Fine Art at the University of Sunderland.

Throughout his career, Mike has maintained his artistic practice and he is now based in Cobalt Studios in Newcastle. He has shown work in a number of one person and group shows in the UK.



The Dawn Chorus at Cheeseburn (2) Detail ... Blackbird

Mike Collier

Produced in collaboration with Geoff Sample and EYELEVEL Creative

Assisted by Tina Webb

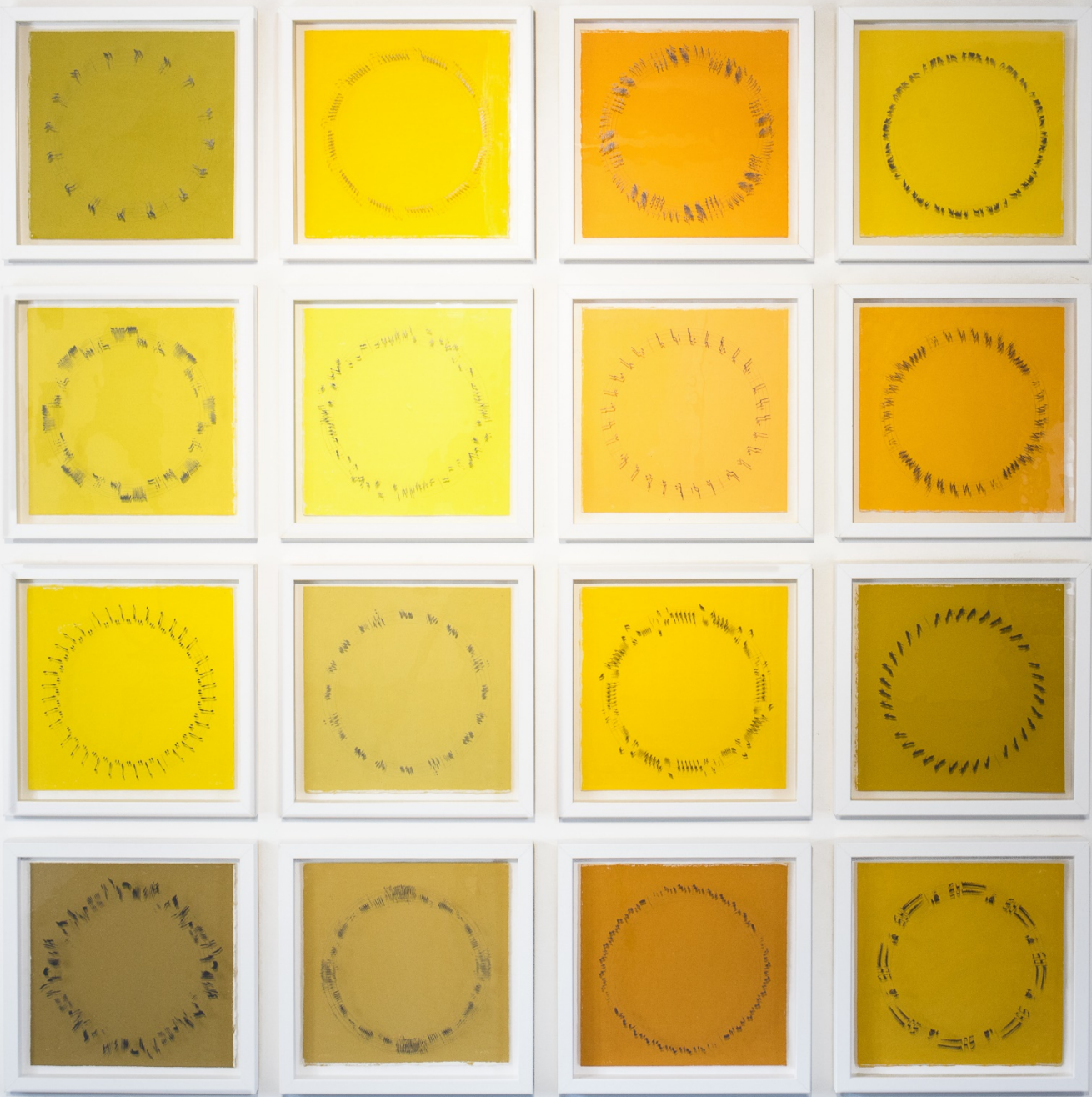
One work; sixteen individual frames

Screen print onto glass (kiln-fired) framing pastel on paper

2017; total size 200 cm square



zú-zú-zú-zú sizzirrr svi-svi-svi siyu-zerrrr sivil • zitrivi-si svi-svi-svi-svi-svi-zivüsu
zivüsu zú-zú-zú-zú sizzirrr svi-svi-svi-svi-svi siyu-zerrrr sivil • zitrivi-si svi-svi-svi-svi-svi-zivüsu





HOME

Call for Participation in Event 1 on Friday 23rd February 2018 at Dalby Forest

Deadline for applications: Monday 22nd January 2018 midnight

A research cluster supported by York St John University



Forestry Commission
England



Forest
Art Works



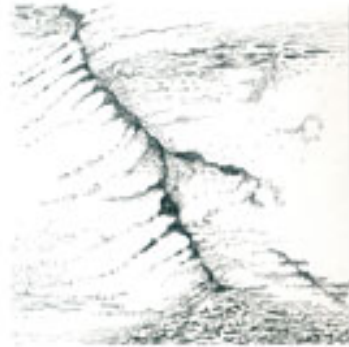
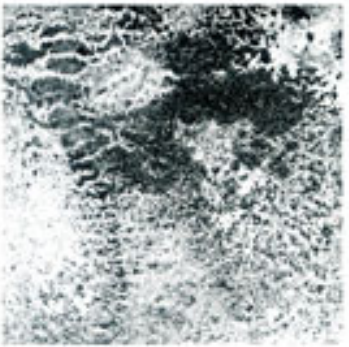
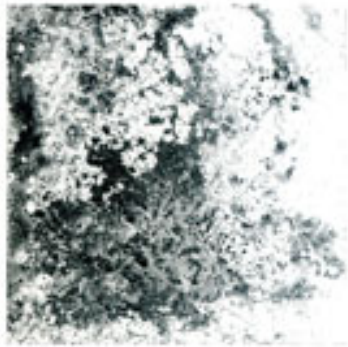
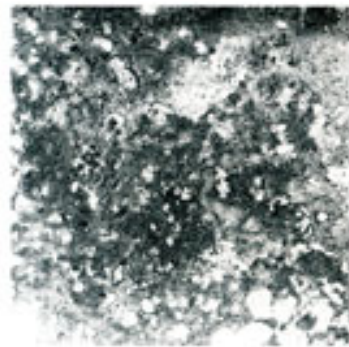
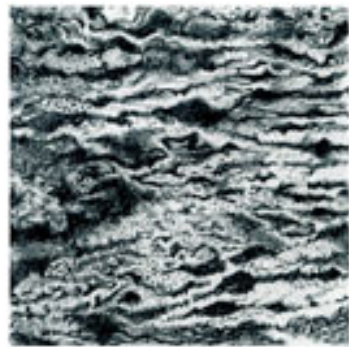
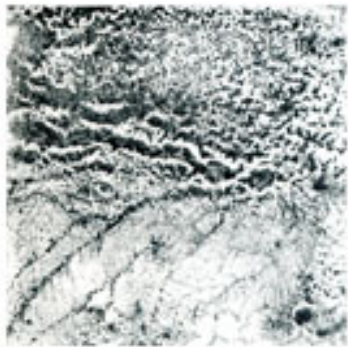
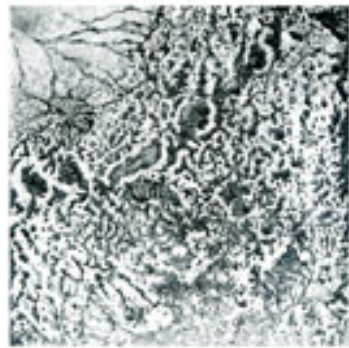
		name
1	Organisers	Jo Sperryn-Jones
2		Christina <u>Kolaiti</u>
3		Mark Adams
4		Sally Taylor
5		Catherine Sutcliffe-Fuller
6		Kim Bennett
7		Paul <u>Spillett</u>
8		Jen <u>Todman</u>
9	Keymaker & speakers	Mike Collier
10		Brian Walker
11		Petra Young
12	Selected artists for CFP	Anna <u>Lilleegen</u>
13		Anna <u>Svensdotter</u>
14		Clare Smith
15		Jane Rushton
16		Joanna Jones
17		John Harrison
18		Maggie Jackson
19	Ute <u>Kreyman</u>	
20	YSJU staff	Helen Turner
21		Lucy O'Donnell
22	External	Janet White
23	Students with an event role	Holly Futers
24		Holly <u>Fegan</u>
25		Molly <u>Shiel</u>
26		Sacha <u>Bykova</u>
27		Natasha <u>Clementson</u>
28		Amber <u>Gosden</u>
29		Amie Calvert
30		Rowenna <u>Godfrey</u>
31		Daisy Taylor
32		Cara Ruddock
33	Ryan Davey	
34	Participating students	Jennie Ashworth
35		Esther Purnell
36		Kimberley Clare Pickett
37		Megan <u>Blackbourn</u>
38		Ellie Pearson
39		Jack Hartley
40		Mollie <u>Turnball</u>

Student Event Roles

Tweeter in Residence: to compose tweets and photos to tweet after the event (no <u>wifi</u> at Dalby)	Cara Ruddock
Photographers to document the event: for possible inclusion in a publication in July	Holly Futers & Sacha <u>Bykova</u>
Programme booklet designers: to design a programme booklet for the Dalby event using the selected artists photos, statements, bios	Hannah Cash & Lucy Charnock
Blogger in residence: create blog and <u>facebook</u> posts - to post during the week after (there's no <u>wifi</u> at Dalby!)	Molly <u>Shiel</u> & Daisy Taylor
IT techs to check and upload artists' <u>pecha kucha</u> presentations. To video the artists presentations. At end of day to upload images/info from participants from the day. To sound record the end of day discussions. Could be one person or a team doing different parts.	Natasha <u>Clementson</u> & Amber <u>Gosden</u>
Registration committee: 2 students to organise registration at the beginning of the day and make sure artists are introduced to each other. organising welcome tea/coffee and/or morning tea/coffee and/or afternoon tea/coffee	Amie Calvert, Holly <u>Fegan</u>, Rowenna <u>Godfrey</u>, Ryan Davey









SelfScapes

SelfScapes



Event 2:

Friday 22nd June at Dalby Forest workshops

- Exhibition in the workshop/exhibition spaces and the forest
- Round table discussions on the exhibition with Louise Hutchinson, YSP and Professor Mike Collier
- Private view in the evening

Event 2: Friday 22nd June at Dalby Forest workshops



Event 2: Friday 22nd June at Dalby Forest workshops



Next year...

Find more funding...



[About Us](#) [News, events and publications](#) [Blog](#) [Finance](#)

[Home](#) > [News, events and publications](#) > [News](#) > [Expanding Excellence in England \(E3\): Research England announces a new funding scheme](#)

Expanding Excellence in England (E3): Research England announces a new funding scheme

09 April 2018

We are delighted to announce the launch of the Expanding Excellence in England (E3) fund, a first new initiative for Research England. This competitive fund will allocate up to £75m over three years to help grow small but excellent research units and departments in English universities. Bids will be assessed by an expert panel chaired by Professor Sir Ian Diamond, Principal and Vice-Chancellor of the University of Aberdeen.

Research England oversees UK Research and Innovation's England-only functions in relation to university research and knowledge exchange, having previously operated within HEFCE. Research England's mission is to create and sustain the conditions for a healthy and dynamic research and knowledge exchange system in English universities. One way in which it will do this is through providing performance-based, institution-focused funding to deliver excellent research and high-performance knowledge exchange, unlocking potential, generating economic and social impact, and meeting national priorities and global challenges. The E3 fund will be one among several new (and existing) policies and initiatives that support Research England in achieving this goal.

Analysis of REF2014 results shows that there are subject areas with excellent research output operating at a limited scale (so called 'pockets of excellence'). While by no means the only barrier, the nature of funding policy may constrain the ability of universities to grow these 'pockets of excellence', meaning valuable opportunities to enhance research performance and the associated benefits may be lost.

Research England is making up to £75m available through the E3 fund to be allocated between successful applicants over three years (Academic Year 19/20 - 21/22). This is based on a two-stage process, assessed via an expert panel. Gateway criterion at the expression of interest stage focus on research excellence, small size, expansion plans and strategic commitment.

By helping to build new capacity to deliver excellent research, this fund will make an important contribution to enabling UK Research and Innovation to meet the Government's commitment to raise total R&D funding to 2.4 per cent of GDP by 2027.

We are now calling for submissions to the expressions of interest (EOI) stage. We are establishing an expert panel to assess these bids, which we will announce soon. At full bid stage we may call on further expertise where required.

For more details, guidance and means to submit an expression of interest please click here. Deadline to submit an EOI end noon on 17th July 2018.

Contact

Tamera Jones, Communications
Manager
0117 931 7606
tamera.jones@re.ukri.org